



# Anue Systems

## Anue 5236 High Density 10G/1G Net Tool Optimizer

*Optimize Network Visibility, Tool Utilization,  
and Data Center Staff Productivity*

### Benefits

- Monitor 10G network links with 1G tools
- Share SPAN ports and TAPs
- Maximize network visibility
- Reduce monitoring tool cost
- Reduce troubleshooting & MTTR
- Improve data center staff productivity

### Optimize Monitoring Tools

- Application Performance
- Security (IDS/IPS)
- Protocol Analyzers
- Data Recorders
- VoIP Analyzers
- Compliance Auditors
- Network Emulators
- Open Source Tools



### Overview

The Anue 5236 Net Tool Optimizer represents a major step forward in high density enterprise network monitoring. By optimizing all three of the key components of monitoring – the network, the tools, and productivity of the network operations staff – companies are empowered to finally focus on the business problems that monitoring is meant to address.

The Anue 5236 helps companies deploy multiple network tools by conveniently linking test and monitoring tools to any traffic on the network. This improves network visibility and maximizes return on investment for those tools. The Net Tool Optimizer aggregates high density network data from SPAN ports and TAPS in your data center to a convenient centralized or distributed tool farm, where multiple tools can share simultaneous access to that network data. This product offers outstanding filtering capabilities, so each unique tool receives exactly the data it needs and is optimally load balanced. With powerful management tools, flexible purchase options, and an intuitive, fully integrated GUI, the Anue 5236 Net Tool Optimizer is in a class of its own.

### Dynamic Filtering is the Key

Only the Anue Net Tool Optimizer offers Dynamic Filtering, providing pinpoint control to maximize tool utilization, automatically handling packets that overlap in filter criteria, and self-maintaining filter settings as your network changes. Filtering can be made on Layer 2–4 criteria including MAC address, VLAN, Ethertype, IP address, IP Protocol, and port number. With Dynamic Filtering, the Net Tool Optimizer is unmatched with respect to load balancing of tools and ease-of-use.

### Robust Visibility into the Network

The Anue 5236 Net Tool Optimizer offers unlimited connectivity options with robust, highly-accurate packet filtering capabilities, ensuring each tool gets the data it needs, and only the data it needs, from anywhere in the network.

**Any-to-Any** – send data from any network link to any tool

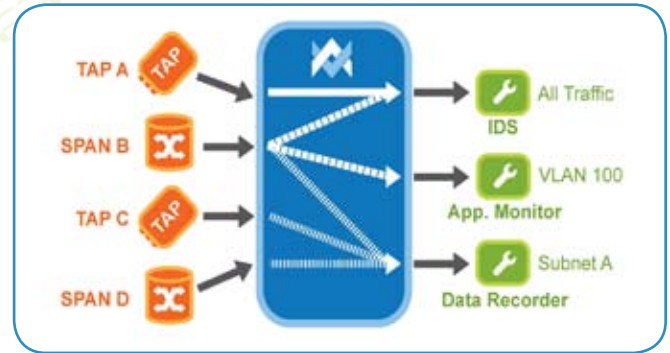
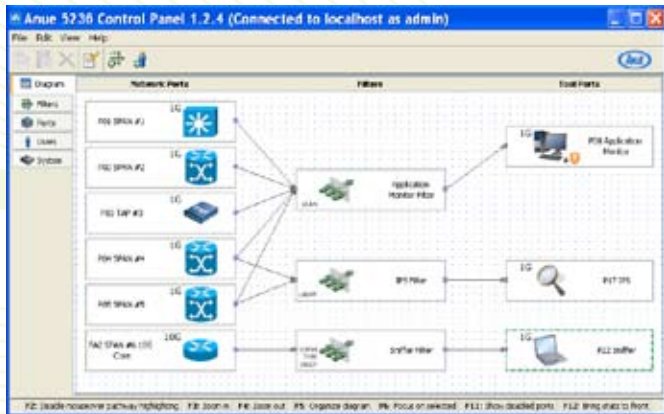
**Any-to-Many** – eliminate SPAN/TAP shortages by multicasting to multiple tools

**Many-to-Any** – provide visibility to multiple network segments to any tool by aggregating traffic



## Optimization Control Panel

The Optimization Control Panel graphical user interface (GUI) is fully integrated to all aspects of the system, including filter rules, and it makes the Net Tool Optimizer very easy to use. Everything is controlled via drag and drop, and the GUI provides top-down visibility into your network monitoring infrastructure. The GUI also includes password-protected, multi-user, and tiered security and administration capabilities.



Traffic can be aggregated from many links to any tool and multi-casted so multiple tools can share single ports

## Specifications

### Network Speed

- 10/100/1000 Ethernet
- 10G Ethernet
- Full line speed on all ports, with filtering enabled

### High Density 10G/1G Port Capacity

- Up to 28 ports per system
- Twenty 10G/1G ports (SFP+)
- Four 10G dual media ports (XFP or CX4)
- Four 1G copper ports (RJ45)

### Modular Port Expandability

- Base system includes four SFP+ 1G ports
- Additional 1G or 10G ports can be easily upgraded in the field in one port increments
- 1G ports upgrade to 10G in the field
- Multiple 5236 or 5204 systems can be connected to increase port count

### Port Flexibility

- All ports can be utilized as either network or tool ports
- Dynamic port reconfiguration with no operational impact
- 1G ports can be upgraded to 10G ports via software license

## Filtering

- Filter parameters - Layers 2–4
  - MAC source or destination addresses
  - VLAN and Ethertypes
  - IP protocol and DSCP/TOS
  - Source and destination IP address
  - UDP, TCP ports
- Simple smart filters; no need to write complex rules
- Dynamic Filtering - no need to adjust filters when ports, tools, or filter settings change

## System Administration & Security

- System administrator control using TACACS+
- Password authentication for different user levels
- Event logging
- Remote management via web access
- SNMP

## Graphical Control Panel

- Easy to use graphical user interface
- Drag and drop interface to configure and modify links, tools, & filters
- System-level view provides clear picture of connectivity and filtering settings
- Tool Management View provides real time statistics on traffic by input data port, filter, and tool port

## Technical Specifications

- Size – 1U modular chassis fits conventional 19" rack
- Dimensions (inches) – 17.5W x 19L x 1.7H
- Power – 100 – 240 VAC, 300W
- Redundant AC power supply
- Regulatory Compliance – FCC, Canadian ICES, RoHS